

Woodside Elementary School District



COVID-19 Safety Plan 2022 - 2023

Updated August 12, 2022

August 12, 2022

Thank you for taking the time to read through the WESD's School Safety Plan for the 2022-2023 school year. We are now two-and-one-half years into living with COVID, and while we will continue to have to report cases and follow procedures as we did to close out the 2021-2022 school year, you will notice that this year's COVID Safety Plan is minimal and asks families to take the precautions that are right for you and your risk level.

While there are fewer COVID-specific rules and practices, WESD continues to follow the CDPH, San Mateo County Health, and the CDC to minimize risk while prioritizing in-person learning and keeping our students and staff healthy and in school. With all of this being said, we must always remember that our response is as a dial, not a switch. We will remain informed and flexible to adjust protocols as needed throughout the year.

If you have any questions regarding this plan, please email covidresponse@woodsideschool.us.

Sincerely,

Steven Frank, Superintendent

Instructional Models and Glossary of Terms

For the 2022-23 school year, we offer full-time in-person instruction. This COVID Safety Plan outlines the health and safety protocols WESD will implement to maintain a safe campus while making the education experience as “normal” as possible for our children and staff.

This COVID Safety Plan aligns with:

COVID-19 Safe Schools Framework (SSF): A [framework for schools in San Mateo County](#) published by the SMC Health and Education Departments. Provides school leaders with the health, education, and legal guidance needed to develop plans for on-campus instruction and learning during the COVID-19 pandemic.

California Department of Public Health (CDPH): CDPH provides resources and current health information to local health agencies and the broader public, including its [COVID-19 Public Health Guidance for K–12 Schools](#).

Health Orders: Public health orders are issued statewide or by local counties when there is an increased risk to the public’s health because of the threat of an infectious disease.

For families with health concerns about COVID who need to keep their students home this year, there are the following options. Please note that neither option allows for students to remain enrolled in WESD:

Home School: Home School is when a parent instructs their children at home. Home schooled students are not part of the school district. [More information about home school is available here.](#)

Online School: There are various online schools operating that you may choose for your students. WESD does not have relationships with or recommend any program or another. To enroll in a private online school, your students will be disenrolled from WESD.

Our Continued Commitment to Health and Safety

Woodside Elementary School District's top priority is the safety of its students and staff while providing a robust educational experience and supporting our community's mental and emotional health.

Remaining safe means remaining flexible to the health conditions at the time and preparing for any number of adaptations to our program. As such, WESD will maintain its "dial" approach, rather than a "switch." We will remain dynamically responsive to COVID data in San Mateo County and the recommendations of health officials.

WESD maintains COVID information at its COVID dashboard on the District's website. WESD points to publicly available resources as much as possible to keep information consistent and aligned with our local and state health departments.

WESD follows [San Mateo County's COVID-19 Safe Schools Framework \(SSF\)](#) as the basis for all health and safety protocols. This Safety Plan document outlines how WESD will implement and follow the SSF guidelines.

Vaccinations

Students: WESD recommends that all eligible individuals be vaccinated. At this time, the COVID vaccine is not required for school attendance. We do, however, wish to keep track of student vaccination for data purposes and to inform our health and testing practices.

WES is asking for parents of all students who are [vaccinated to submit proof of your child's vaccination card](#). If you have already submitted proof of vaccination, you do not need to do this again. This information is kept confidential, as are all health records. For assistance, please contact Elvira Martinez at eliviramartinez@woodsideschool.us.

Staff: The WESD School Board has a current resolution that all WESD staff be fully vaccinated for COVID-19. The State Public Health Order requiring verification of staff vaccination remains in effect for the 2022-2023 school year.

Parent Volunteers: The SSF stipulates that "workers" include "volunteers who are on-site at a school campus supporting school functions" (SSF p. 4). Volunteers will be asked to [provide proof of vaccination prior](#) to volunteering on campus.

Parents Attending Events: Parents who come on campus to attend an event in their role as a parent do not need to show vaccine confirmation.

Masking

WESD, along with the CDPH and San Mateo County Health, continue to “strongly recommend” masks to be worn by students and staff while indoors. Any students and staff who choose to wear a mask either indoors or outdoors is supported in doing, and the community is urged to practice tolerance and respect for each other’s mask choices. The Board and District leadership continue to monitor COVID data and may choose to reimpose a mask mandate at any time should the data suggest it is prudent.

Physical Distancing

In line with the CDPH guidance that does not include any recommendations concerning physical distancing in schools, there are no physical distancing guidelines in place at WES. WESD will instead focus on other mitigation strategies.

Ventilation

WESD stresses proper ventilation in classrooms to help mitigate the spread of COVID-19, including the following:

- MERV 13 air filters in all HVAC systems 2x/year
- Run HVAC systems set to only bring in outside air
- Utilize HEPA filters in all classrooms
- Open classroom doors/windows as much as possible
- Utilize outside spaces for instructional use

Poor Outdoor Air Quality: In cases of poor outdoor air quality, doors and windows will be closed, HVAC units (with MERV 13 filters) will run without drawing outside air, and HEPA filters will continue to filter the classroom air, per the SSF guidelines. You may also reference the [EPA’s air quality guide for safe activities and schools](#) and the [San Mateo County Office of Education’s Air Quality Resources webpage](#) for more information.

Hand Hygiene

Students and staff will practice hand hygiene by washing their hands often, with soap and water for 20 seconds. Handwashing is most important:

- When arriving at school or coming in from outside
- Before/after eating or using playground structures
- After using the restroom and after sneezing or coughing

Illness, When to Stay Home, & Returning to School

COVID is just one of many reasons students may need to stay home from school. As always, sick children and staff should stay home. Parents should check their students for signs and symptoms of illness daily before school. If your child has a temperature of 100.4° F/38° C or higher, or has a low grade fever with accompanying cold or flu symptoms, please don't send them to school.

Students and staff experiencing any of these symptoms should *stay home* and take a COVID test. Students and staff may safely *return to school* when they meet this criteria:

- At least 24 hours since resolution of fever without medication; **and**
- Other symptoms have improved; **and**
- They test negative for COVID (antigen test preferred for return to school), **OR** a healthcare provider has provided documentation that the symptoms are typical of their underlying condition (e.g. allergies or asthma) **OR** a healthcare provider has confirmed an alternative named diagnosis (e.g., Streptococcal pharyngitis, Coxsackie virus), **OR** at least 10 days have passed since symptom onset.

Staff will visually monitor students for signs of illness throughout the day. When students show signs, they will be sent to the health office to be assessed by the school nurse/office staff. Please be sure your child's health records are up-to-date, especially with allergy or asthma information as those conditions can present similarly to COVID symptoms. Parents will be called when students need to be sent home.

WESD will not offer surveillance testing. Instead, we will follow CDPH guidelines and rely upon at-home, antigen testing. Students and staff who become sick at school will be offered a rapid test if they are registered in our testing system with the CDPH. Students who do not have permission for on-site rapid tests will be sent home to test. More information regarding opting into allowing the school to test your child will be communicated soon.

Cleaning and Disinfecting

Cleaning means using soap and water to remove surface dirt. *Disinfecting* removes any remaining germs on surfaces, which further reduces any risk of spreading infection. Disinfection will be used as a tool against the virus, with safe and effective targeted application. Cleaning will occur daily and disinfection daily in high touch areas, and as needed in other areas.

Travel

WESD recommends that anyone traveling follow the [CDC Travel Guidelines](#). When school reopens following major breaks (i.e. summer, winter, spring) WESD recommends that all students take a rapid test at home prior to returning to school. While this is not mandatory, it is highly recommended. If you require an antigen test, there are tests available in the school office.

Music/Sports

There are no specific protocols for music and sports (PE and after-school). Parents of students who participate in music and sports are especially encouraged to have their children vaccinated. Individual teachers and coaches may make modifications at their discretion, for example holding music practice outdoors or with additional spacing indoors.

Afterschool Activities

Afterschool activity providers using WESD facilities should follow the same health and safety protocols as WESD, as outlined in this document.

Special Education & 504 Plans

Special education services will be provided on campus as usual. If there are questions regarding your child's educational program, please contact your child's case manager. If you continue to have questions, please contact Director of Student Services, Marta Batlle, at mbatlle@woodsideschool.us.

Screening Testing

The state no longer supports the pooled testing program so there will be no surveillance testing with WorkSite Labs or community testing with the Virus Geeks. WESD encourages families to use over-the-counter antigen tests at home, especially following travel, when someone in the household feels ill, or 3-5 days following an exposure. If a test is needed, please contact the school office.

Response Testing

Students or staff who show potential COVID symptoms at school will be offered a rapid test on site if they are registered in the CDPH's program (more communication to follow in the upcoming weeks). Students who are not registered and show symptoms at school will be sent home until a negative test is performed.

Case Reporting

If your WESD student or anyone living in your household receives a positive COVID test, please notify the office or email covidresponse@woodsideschool.us right away. Do not send your COVID-positive child to school. District staff will work with you to ensure that your family has appropriate isolation/quarantine information. The district reports the case to San Mateo County Health, cleans and disinfects the area where the individual was, and sends notifications.

Isolation refers to a positive person isolating themselves to avoid infecting others. *Quarantine* refers to an exposed person/close contact staying away from others to limit spread.

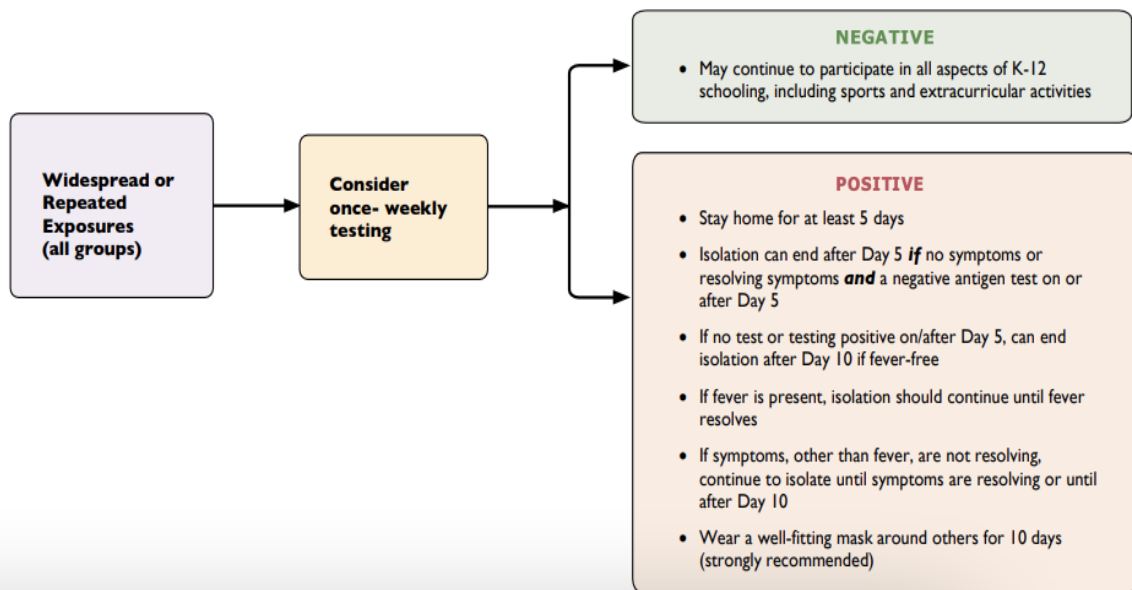
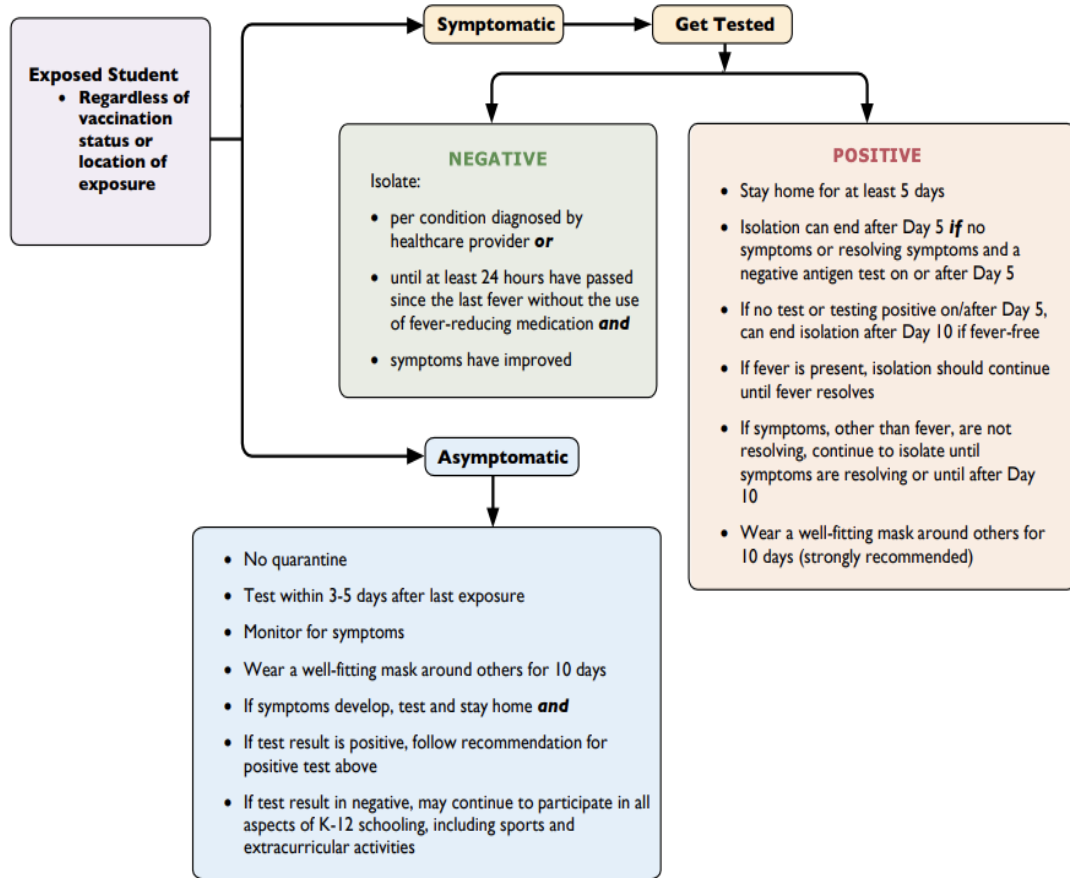
Exposure Notification

Parents will be notified if a positive COVID case has been reported in their child's classroom and/or grade level.

Quarantine

Quarantine is not recommended following a school exposure, regardless of vaccination or masking status, as long as the exposed individual does not develop symptoms or test positive for COVID. It is recommended that exposed students test within 3-5 days of exposure. Exposed individuals may continue to take part in all aspects of K-12 schooling, including sports and extracurricular activities unless they develop symptoms or test positive for COVID-19. It is highly recommended that exposed individuals wear masks, as is recommended for everyone indoors in a school setting.

COVID-19 Student Exposure (CDPH)



COVID-19 Staff Exposure (CDPH)

Note: With the new variants, SMCH is finding people are being reinfected within a few weeks of having COVID-19 and now recommends that schools test exposed individuals even if they had COVID-19 during the last 90 days.

